

秋

仙

遺

譜

秋僊遺譜後集目錄

後集三卷

斗底

無敵

五馬

小角

八王走馬

三變

彩雲

四變

妙筭

莫識

無窮

會英

三才

五老

中鈎

西咸

東咸

三變

清丘

三變

遊魚

三變

闕角

豐稔

絕妙

回鸞

單井

用間

虎牙

飛角

天長

清古

賺關

連碧

神龜

清風

悟仙

三變

決勝

爛柯

二變

咫尺

換骨

二變

幽玄

三變

深淵

二變

難思

二變

二子分憂

背水陣

二變

八節

玉兔吞霞

盡解

二變

聚寶

二變

武關

野猿

龜星

黃鍾

爭功

穿揚

精城

三虎

垂鈎

夏雲

破敵

四時

貫石

麋鹿

鍊匣

九里山

十着九不是

金印

黃河九曲

運籌決勝二變

玄玄二變

鴈行

小兔二變

鍊匣陷虎

奪旗

紀信詐降

星網

白鶴交

極玄

銀臺二變

白起破圍二變

破蚩尤

八龍

錦香囊

用策

二變

十一曜

蘇武持節

筮篋

雙鷗

寸心千里

虎驅羊

解連環

二變

四皓遊蓬萊

晏生

養虎

玄機

擒縱

十將

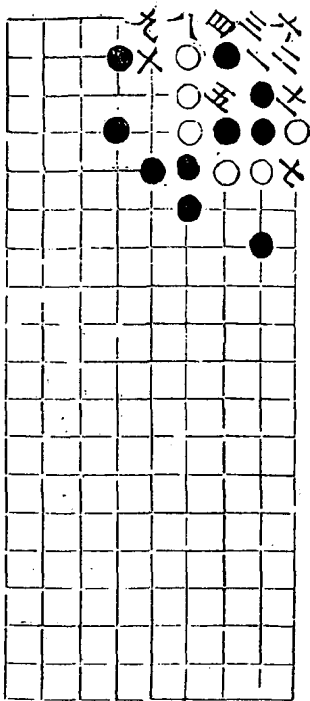
相如歸璧

火內蓮花

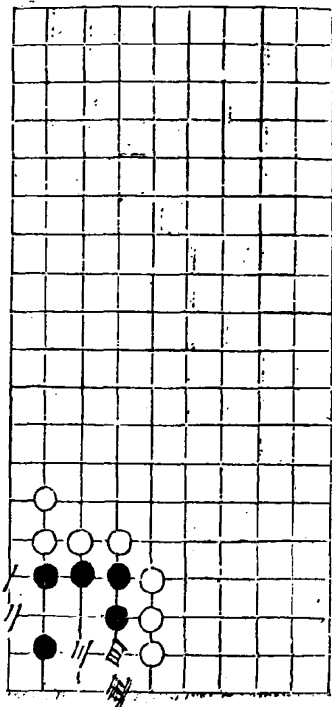
秋仙遺譜後集三卷目錄



斗底

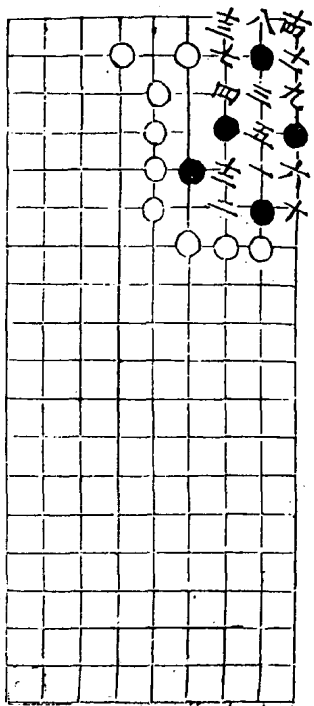


無敵

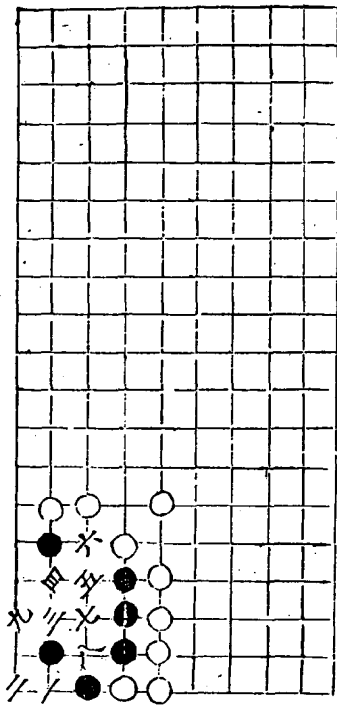


五馬

十五圖三



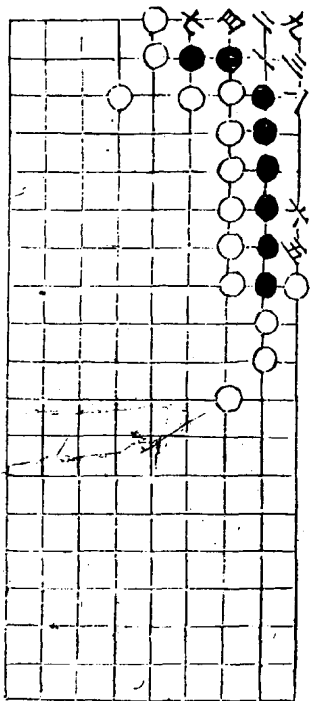
小角



八王走馬

黑活

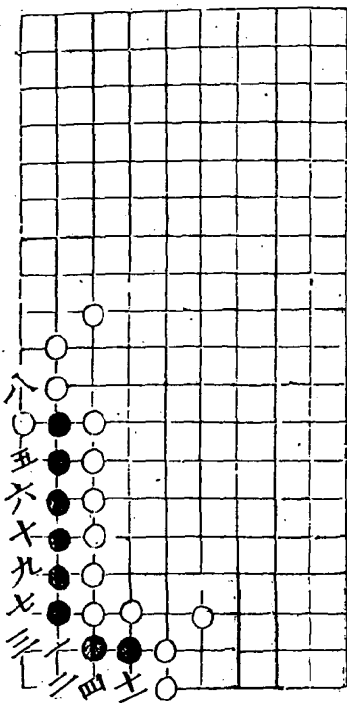
十三打



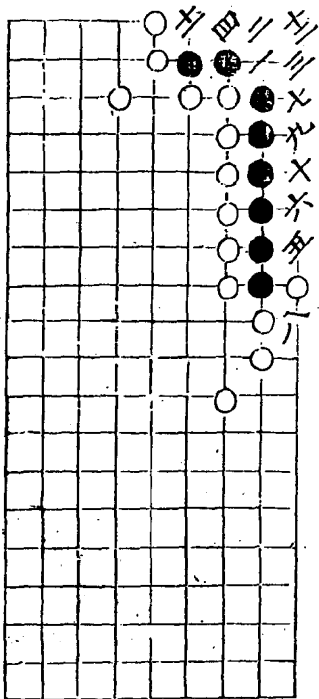
八王走馬

二變

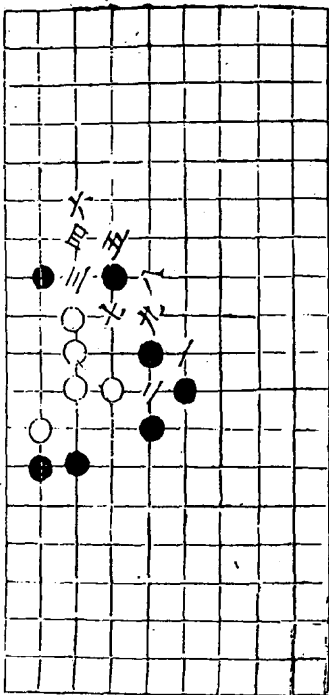
士同○



三變 黑死 十三同七

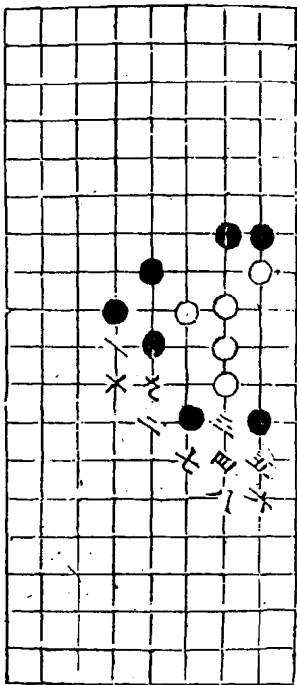


彩雲  
有死有活

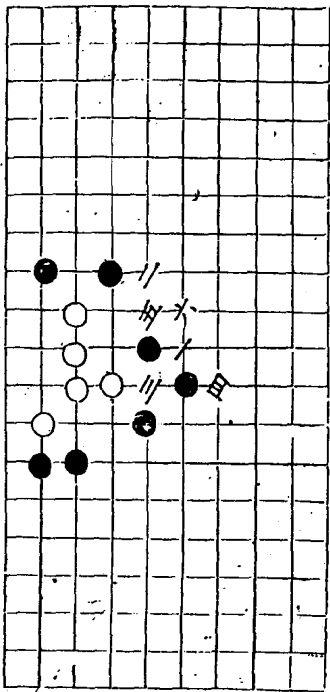




二變



三變

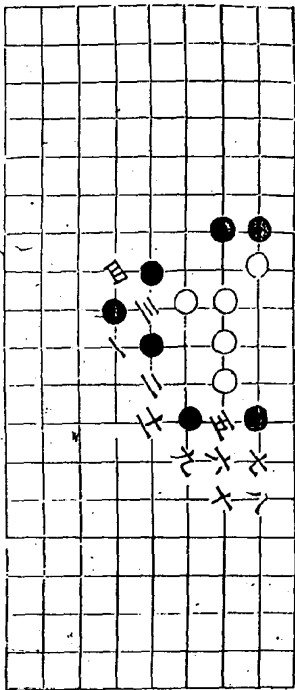


長谷川玄白

全卷

五

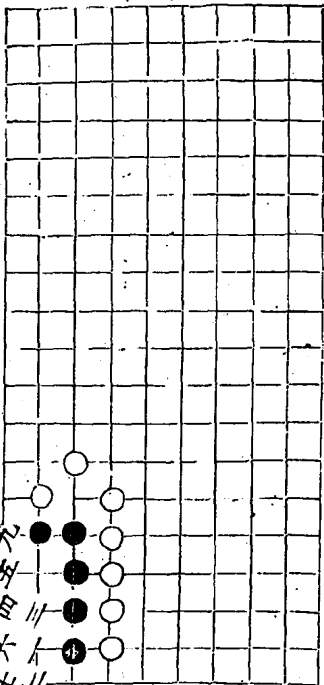
四變



妙算

黒活

八同六



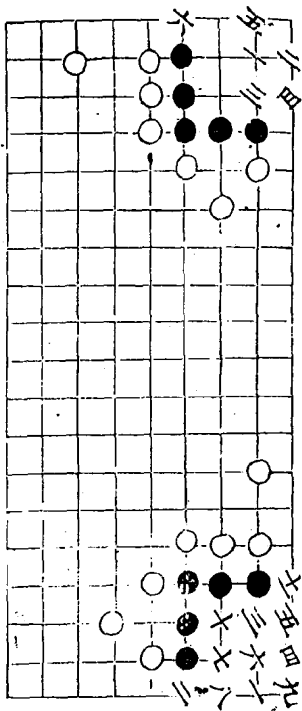
九  
月  
日  
六  
十

〃  
〃  
〃  
〃

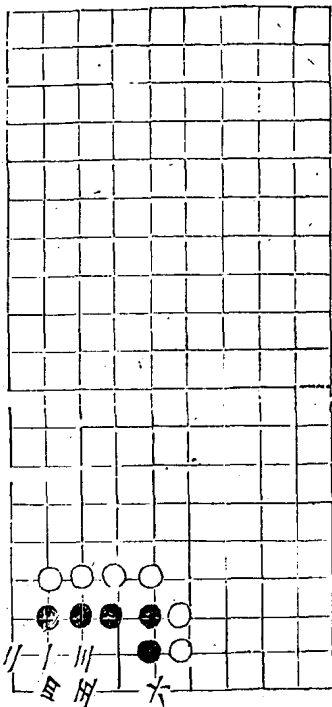
莫識黑活

二變

十二同六



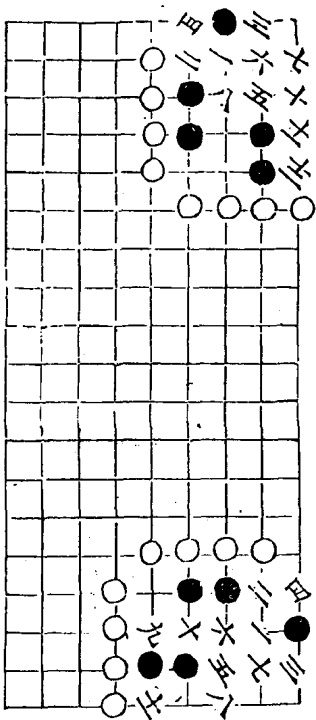
無窮



會英 有死有活

九同六

二變



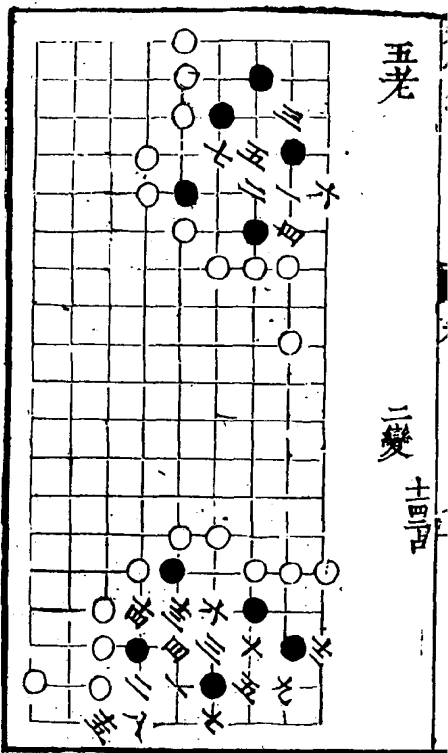




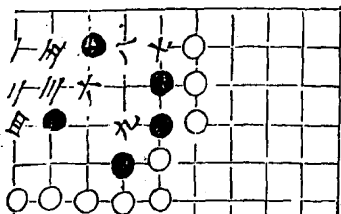
五老

二變

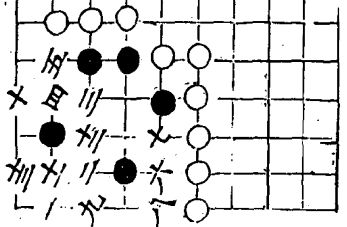
十四



中鈞

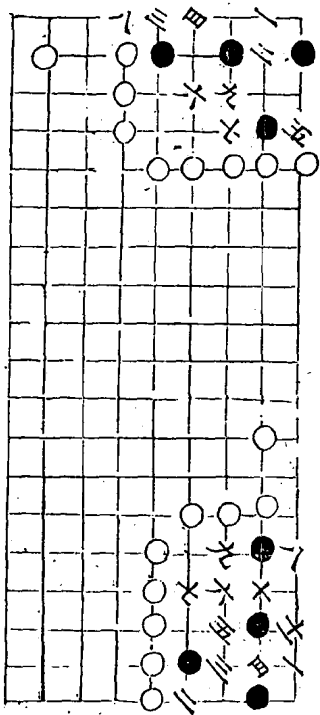


二變

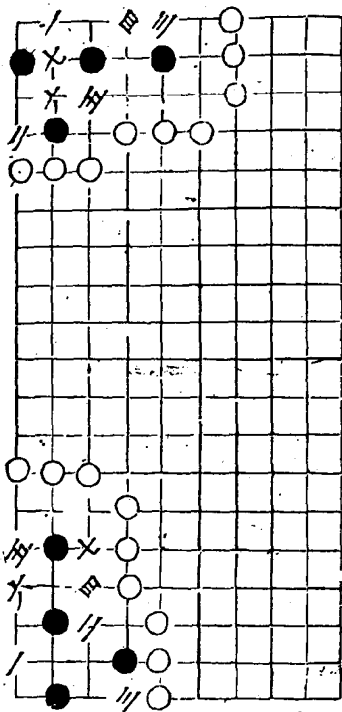


西減活

二變死



東威



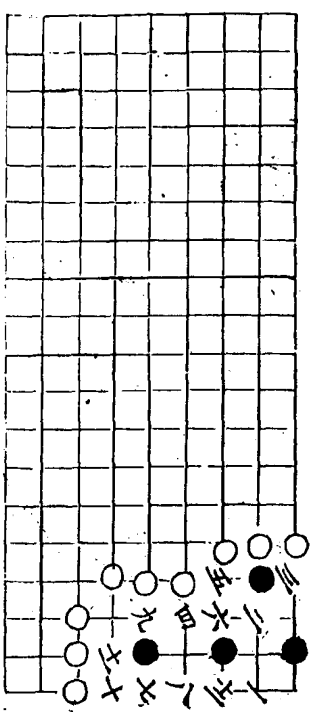
列不逆言

十三頁七

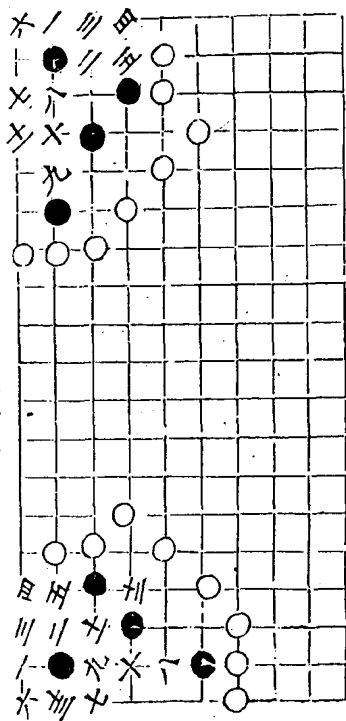
三

中

# 三變



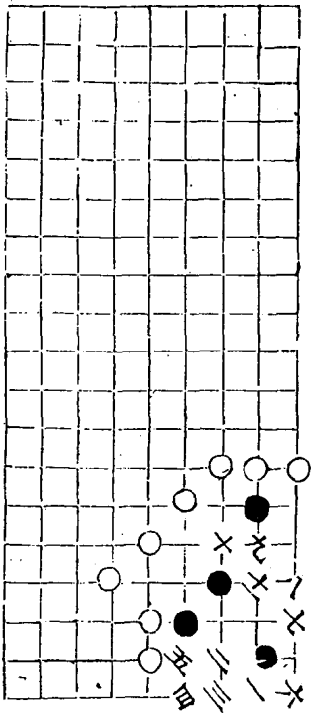
清丘



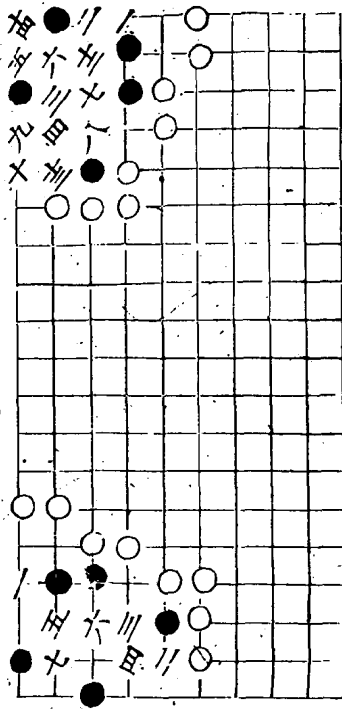
二變

十同三

三變



遊魚



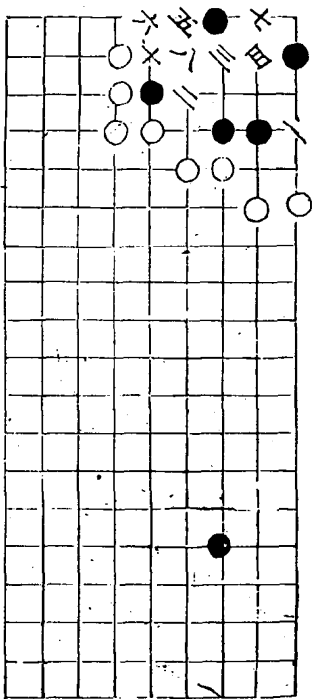
十七三占 十五三點

二變

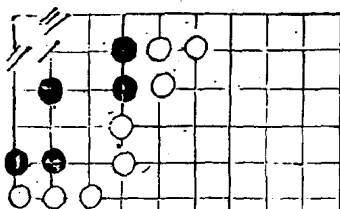


三變

九三粘

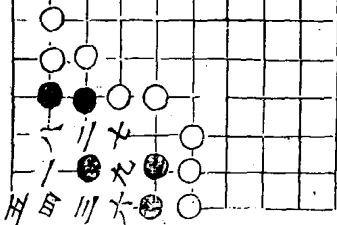


関角

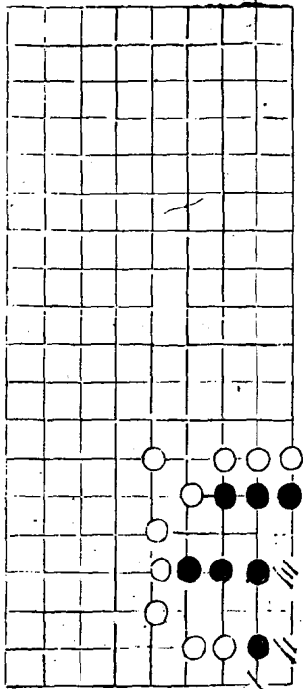


二變

十四四



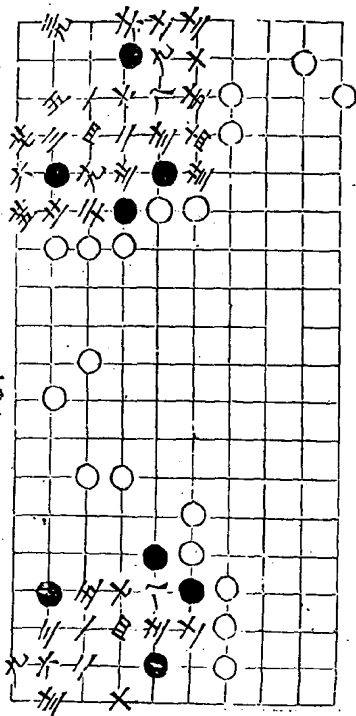
豐稔



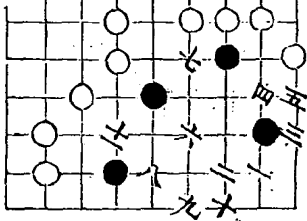
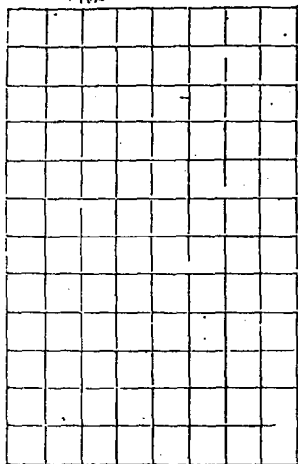
絕妙

士同九六同十一九同八廿同三廿六同九共同九

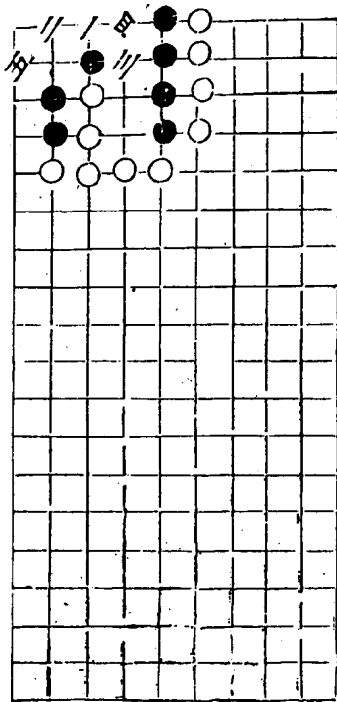
二變



回鷹

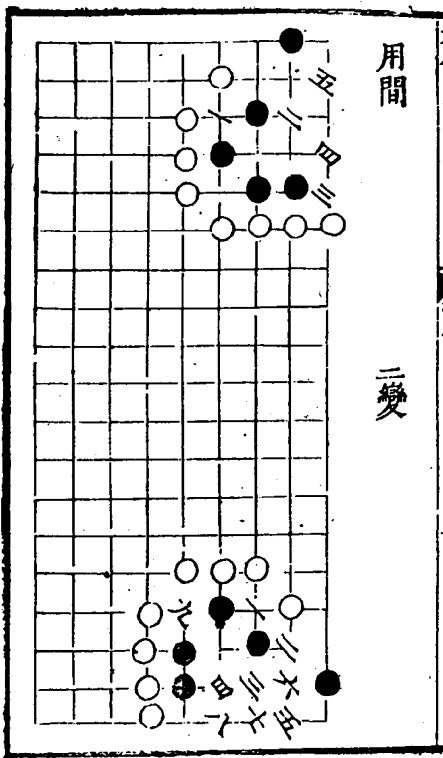


單井

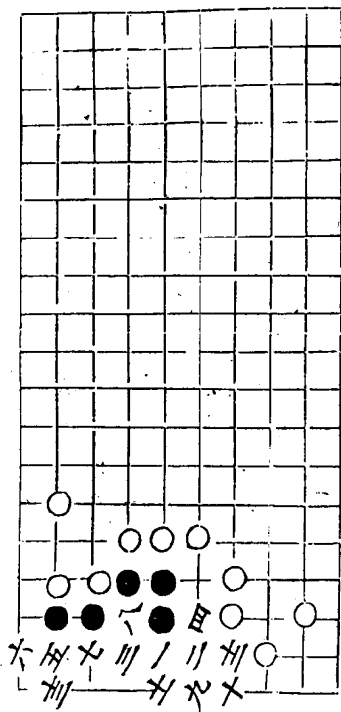


用間

二變



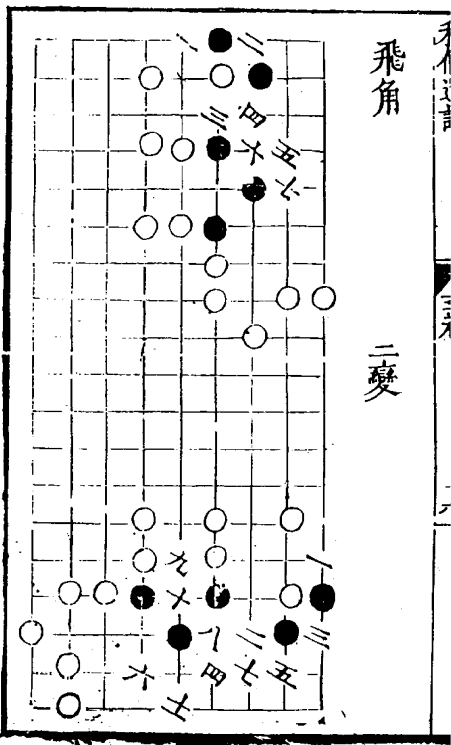
虎牙



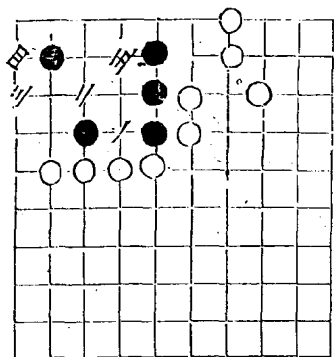


飛角

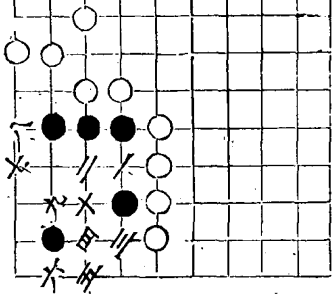
二變



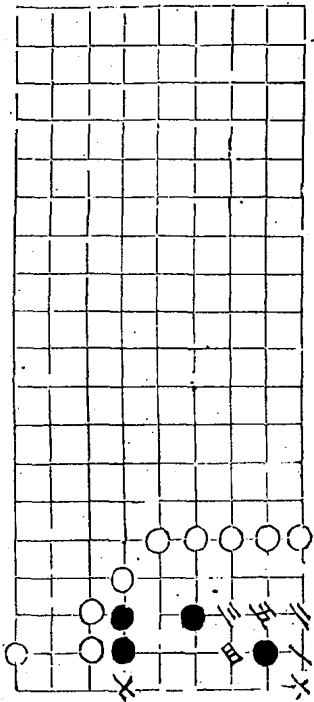
天長



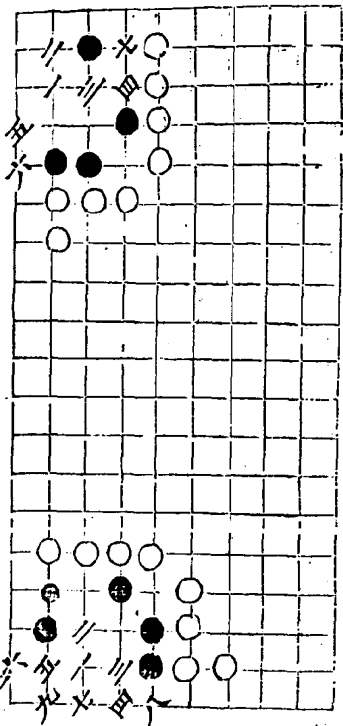
二變



清古

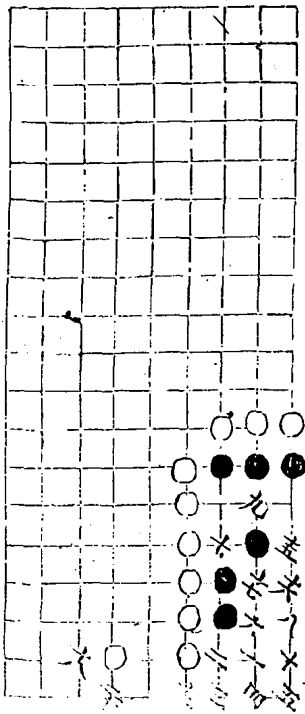


燕關

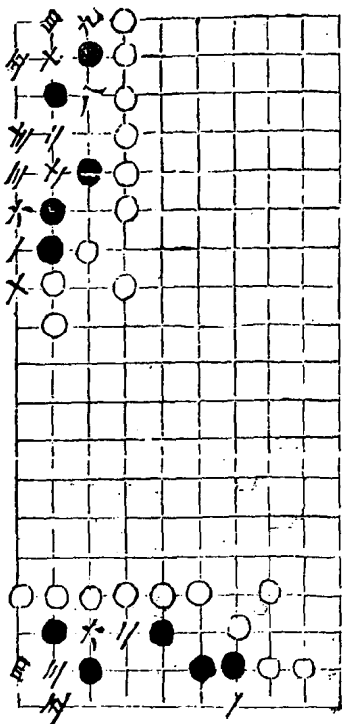


連碧 黑活

十四三四四古同无二吾



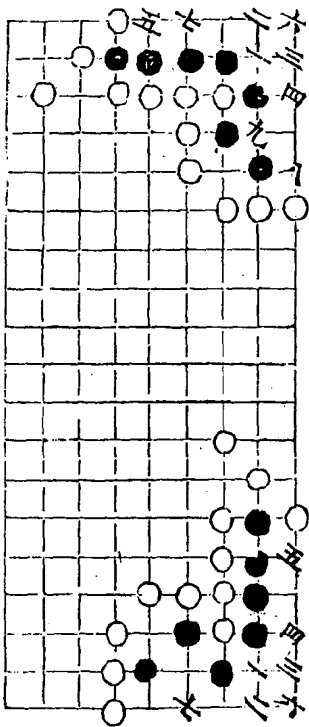
神龜



二變活

清風

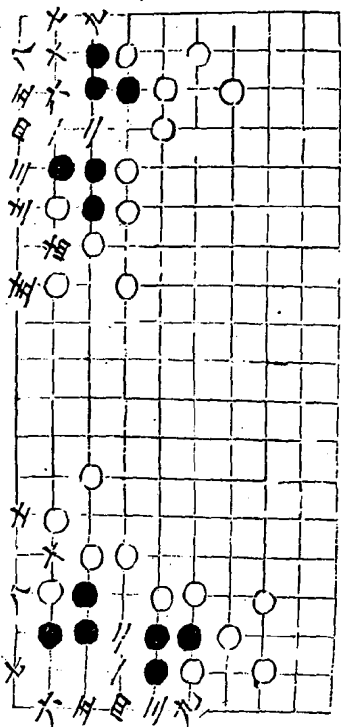
二變



悟仙

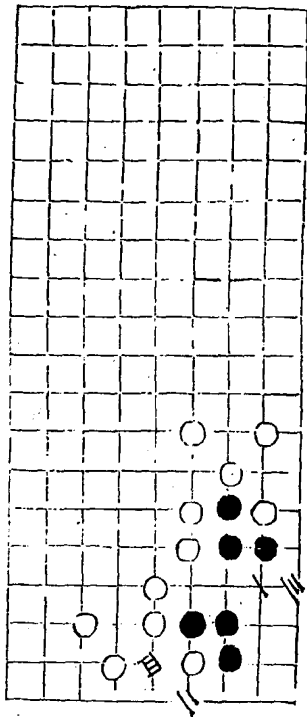
士圖 士圖

二變



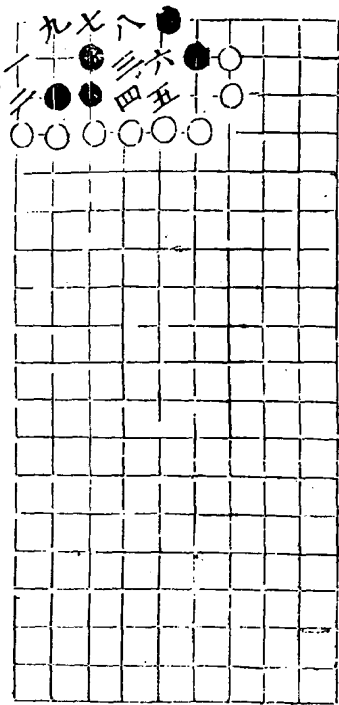


三變



○

決勝

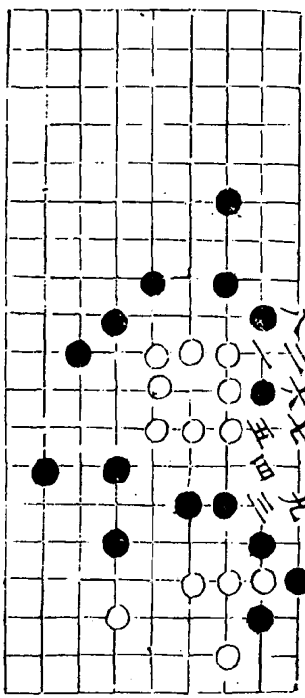


欽定四庫全書

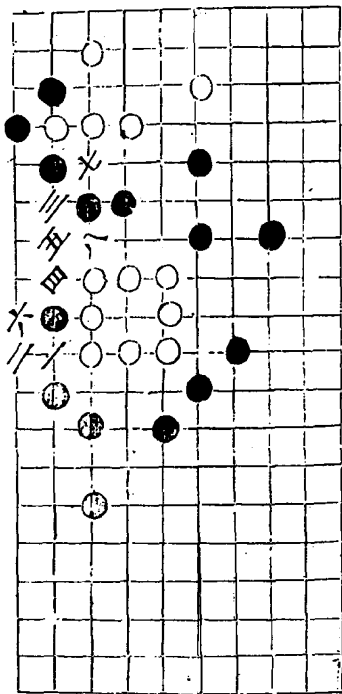
三卷

廿

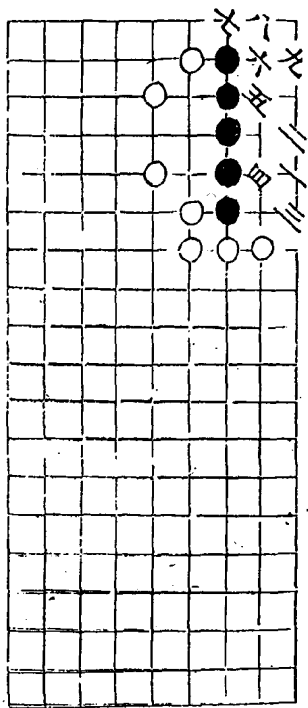
爛柯仙



二變



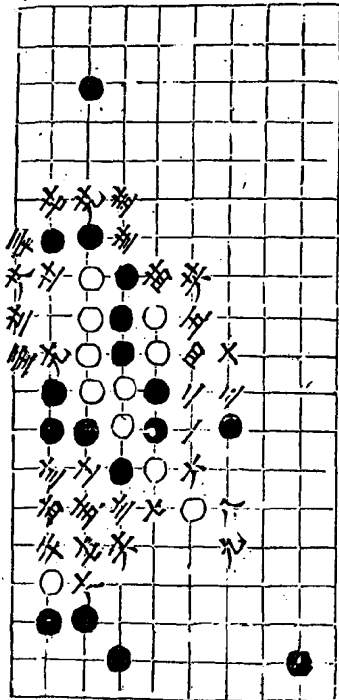
咫尺







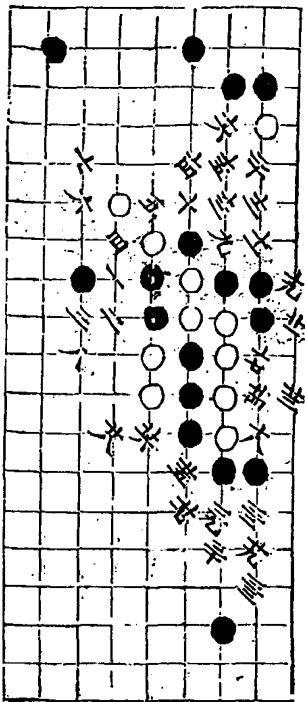
幽玄





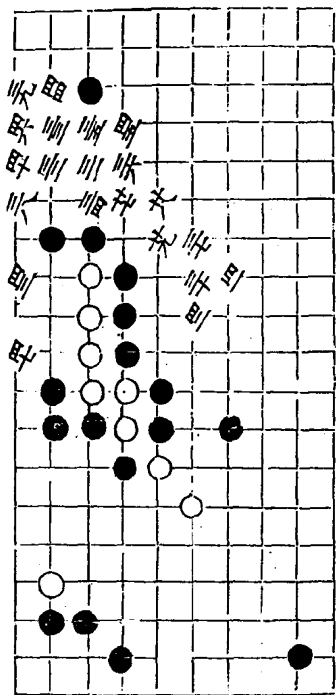
二變

共八二點眼

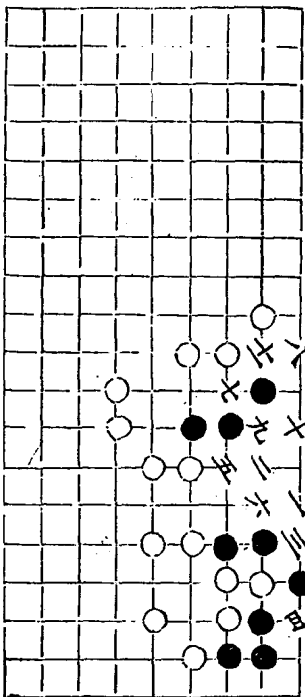


三變

一着至七着同三變

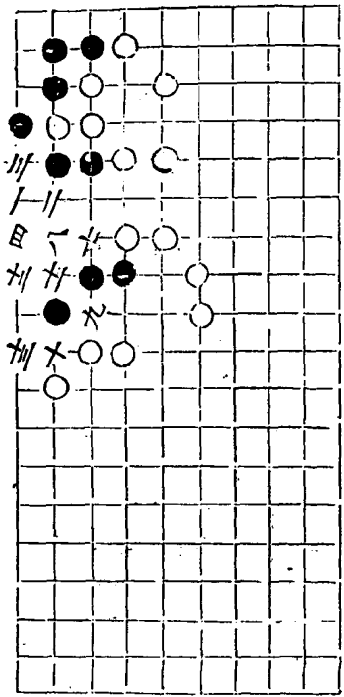


深淵



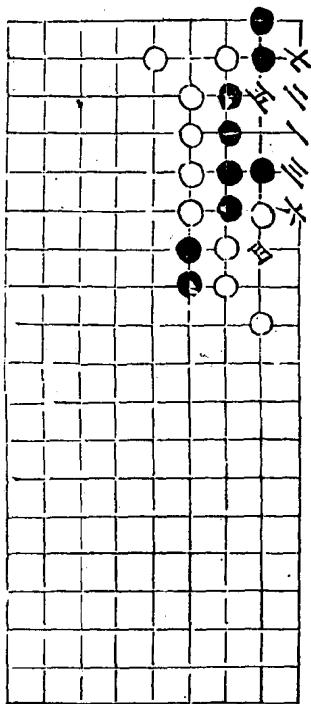
二變

五同三六同



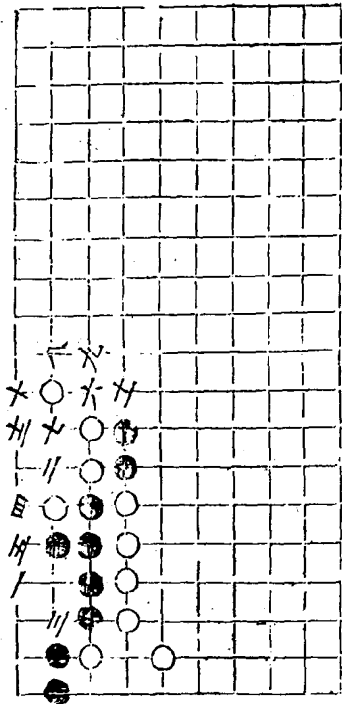
川  
 十  
 目  
 州  
 十  
 州  
 州

難思

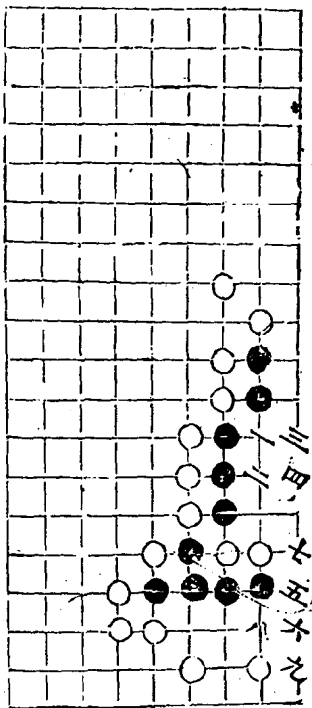


二變

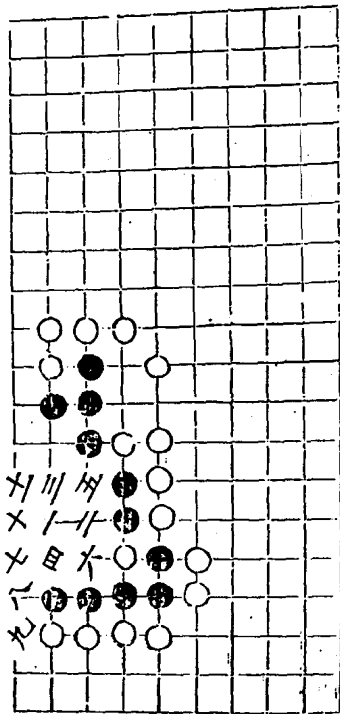
吉同六



二子分憂

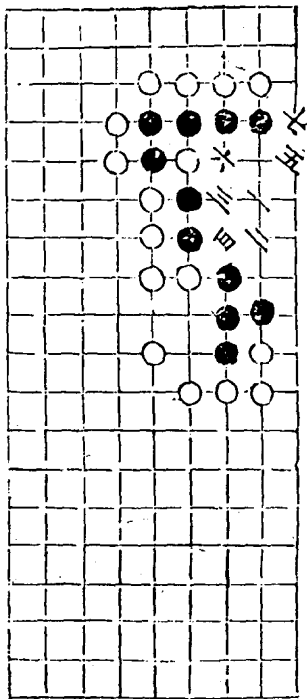


背水陣

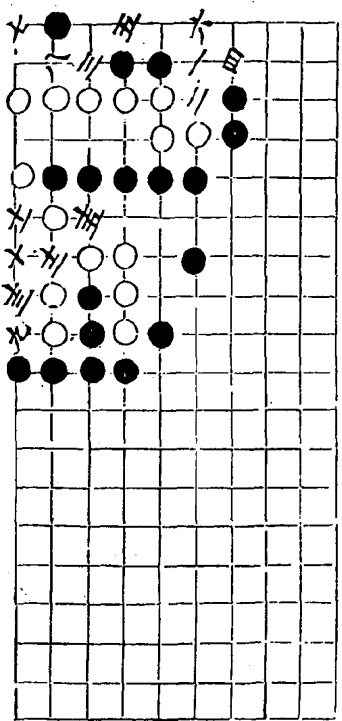




二變



八節



十四三

八節

三

七

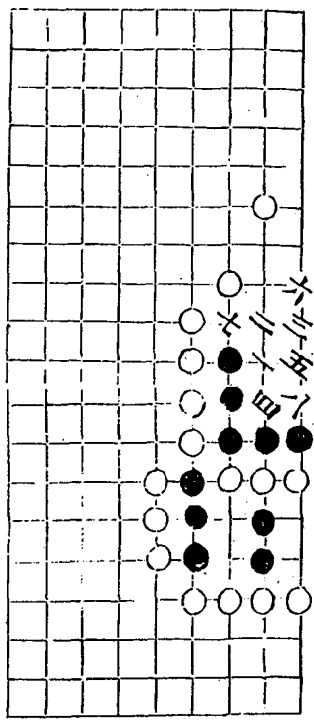
易經

卷之三

三

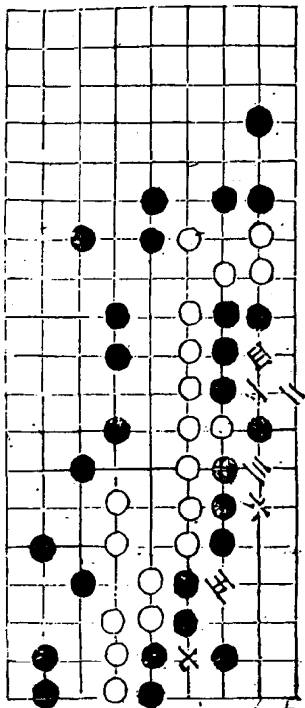
# 玉兔吞霞

九同五 十同乙



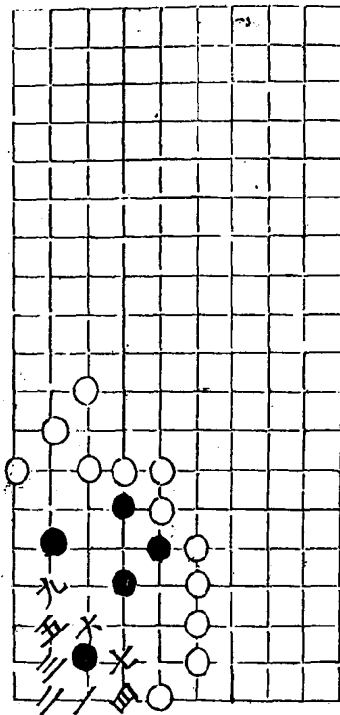


二變

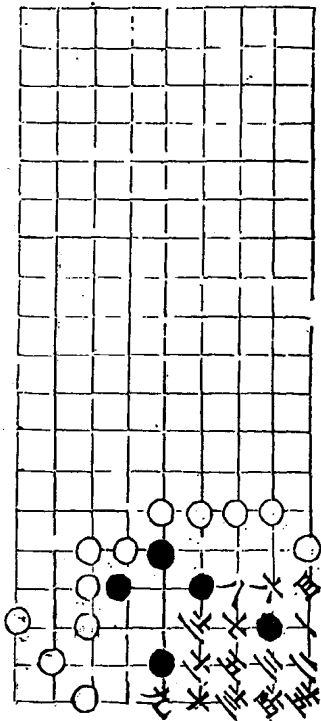


聚寶

八  
二



二變



武関

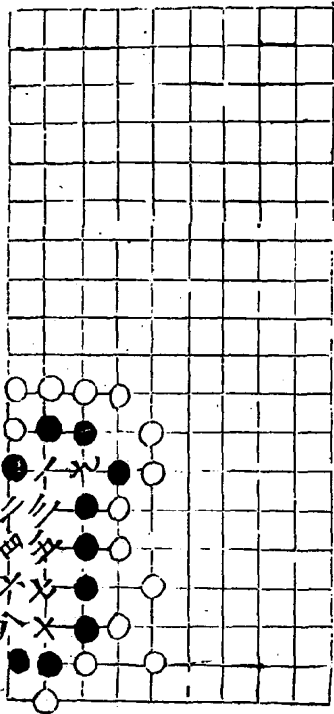
十二同五

十三同三

十三同九

三

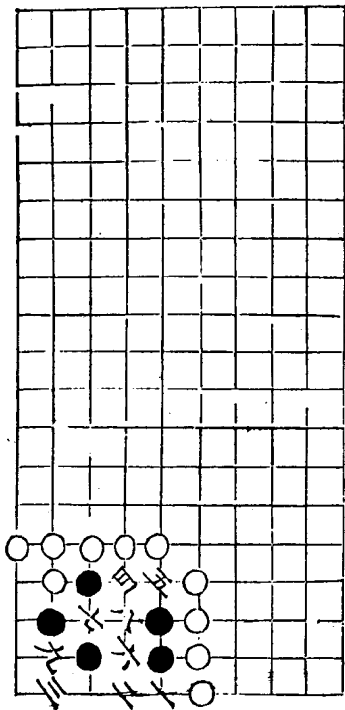
廿二





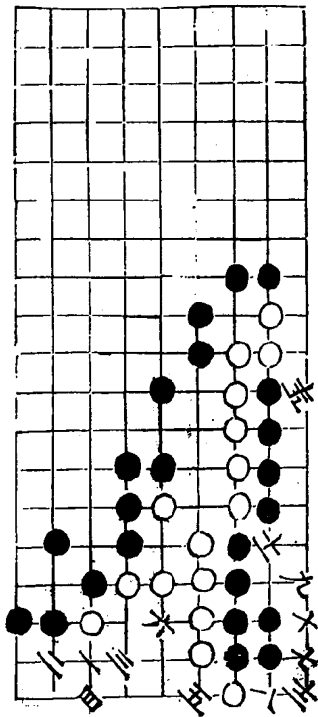


龜星

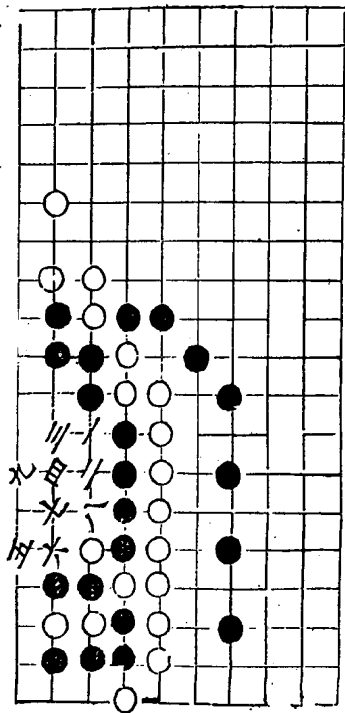


黃鍾

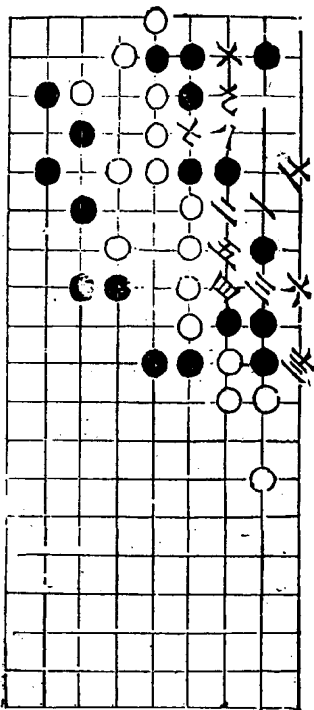
古三點 古四七



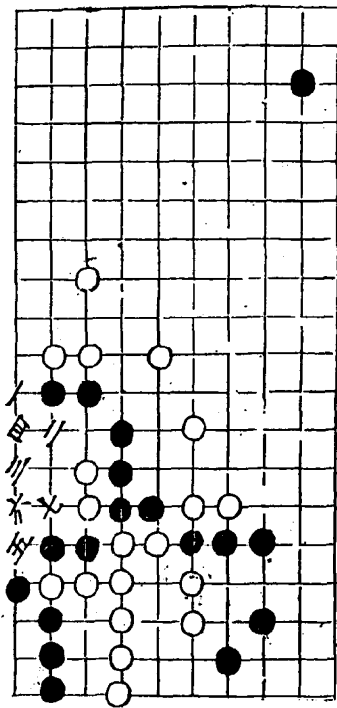
爭功 劫出勝



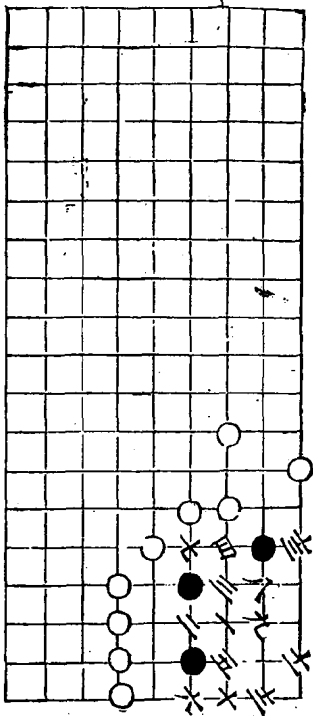
穿揚



精城



三虎





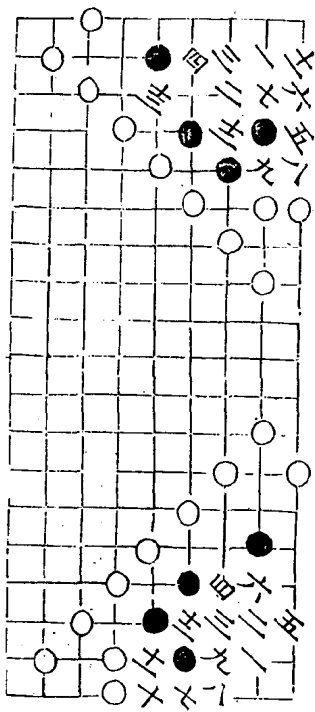


夏雲

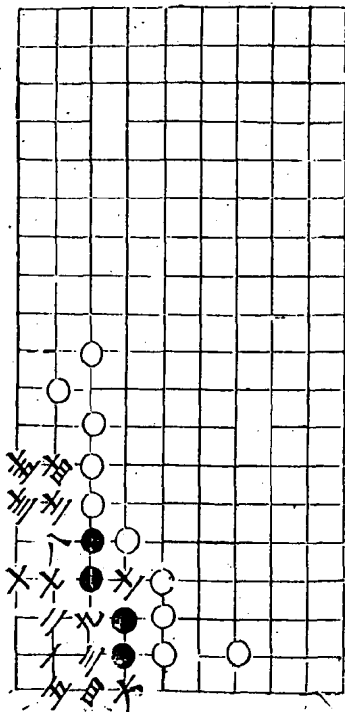
十同五

二變

十三同七



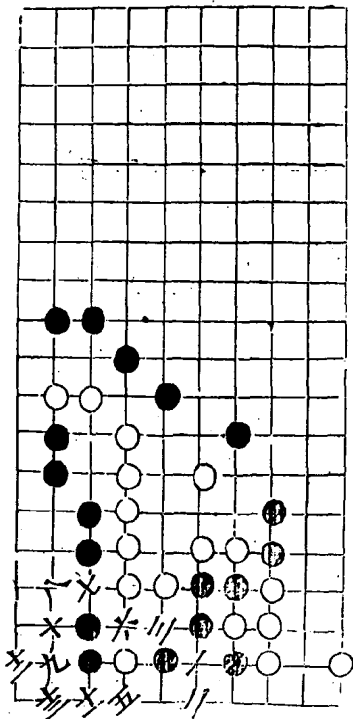
破敵



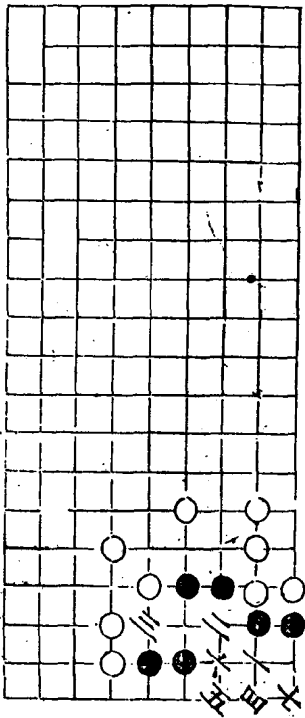


貫石

四同乙

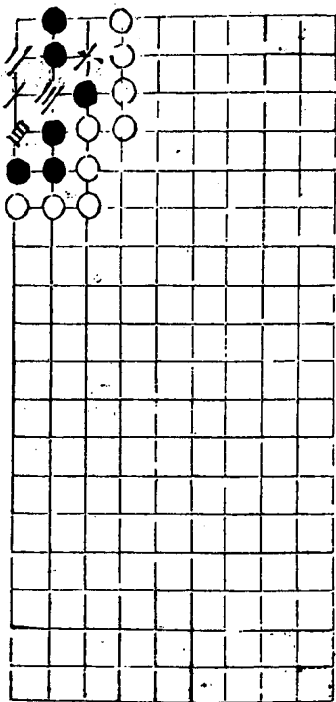


# 麋鹿

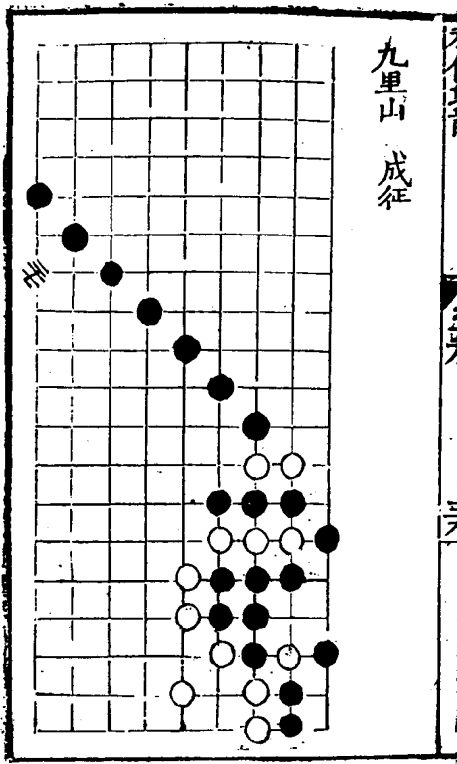


鐵匣 黑活

五圖 七角



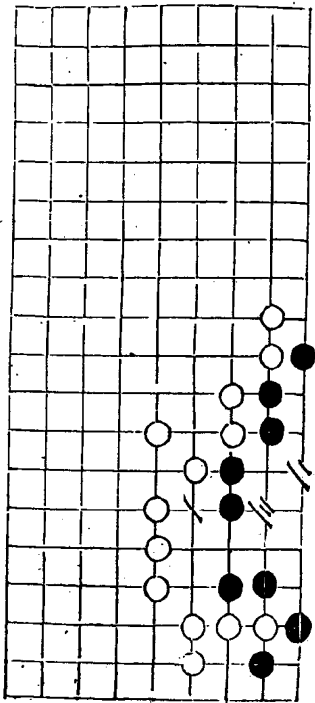
九里山 成征



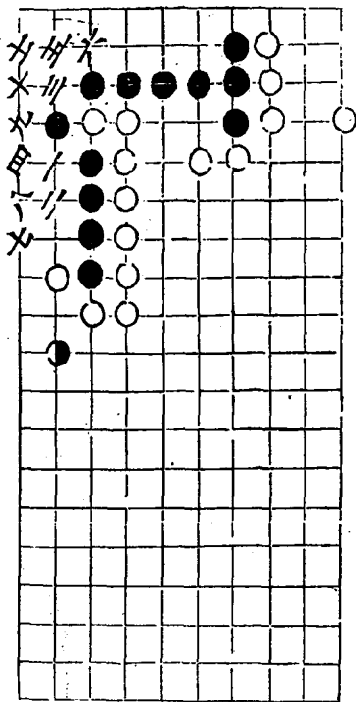




士着九不是



金印

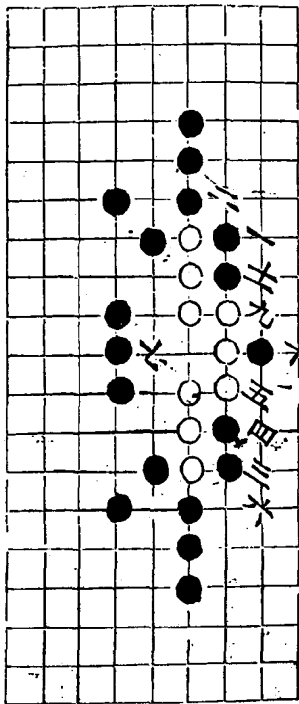


天田遺譜

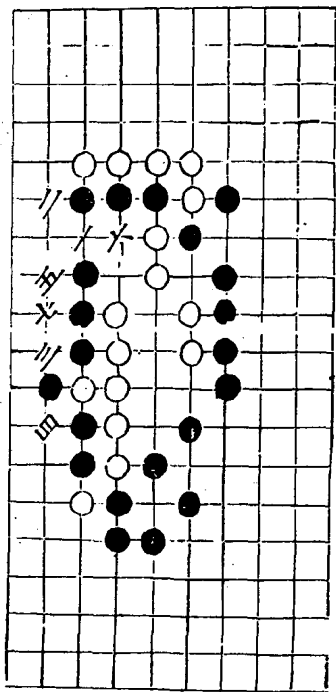
卷一

四

黄河九曲

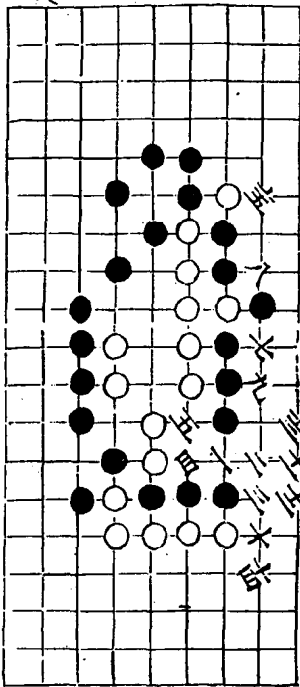


運籌決勝



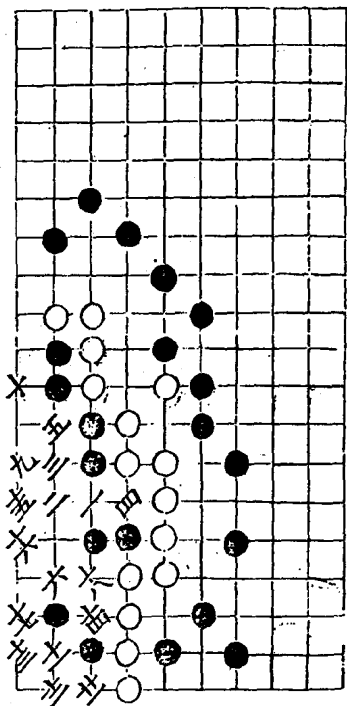
二變

六頁



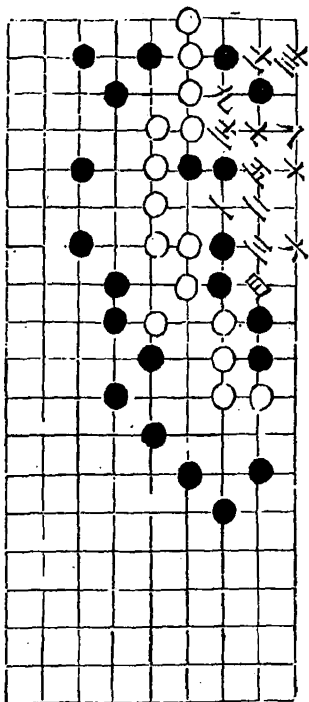
玄玄

七前一 八七三張 九八三折 千同一

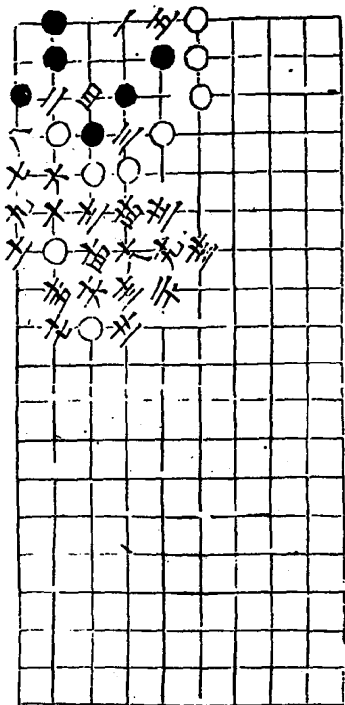


二變

兩活



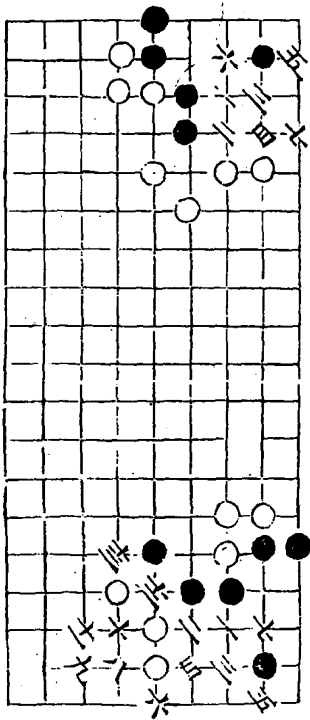
馬行



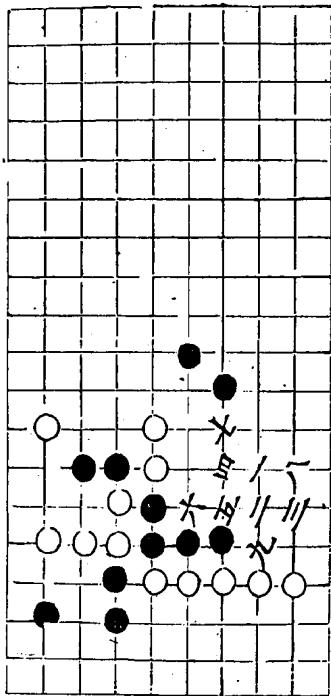


小免

二變



缺匣陷虎

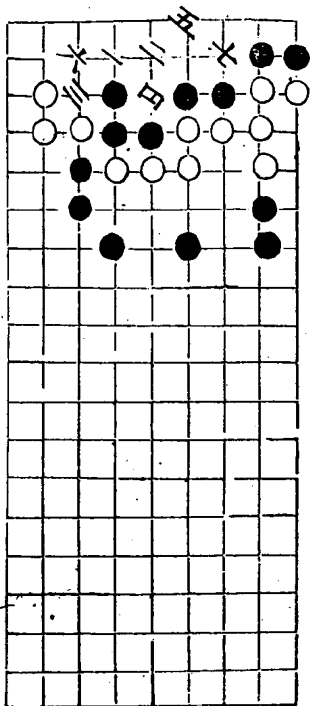


天  
子  
遺  
書

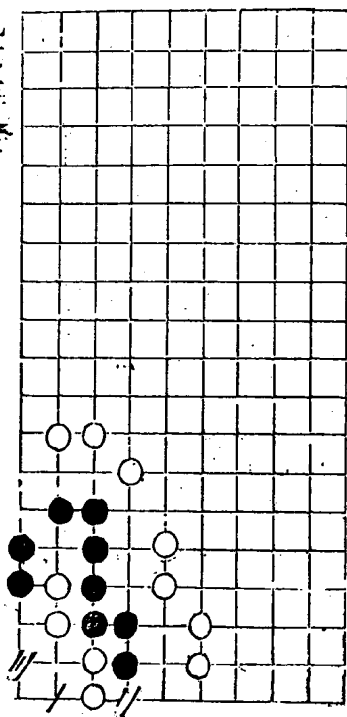
卷  
一

五  
上

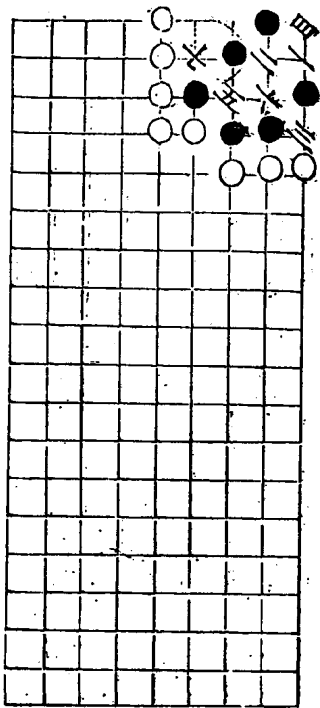
# 奪旗



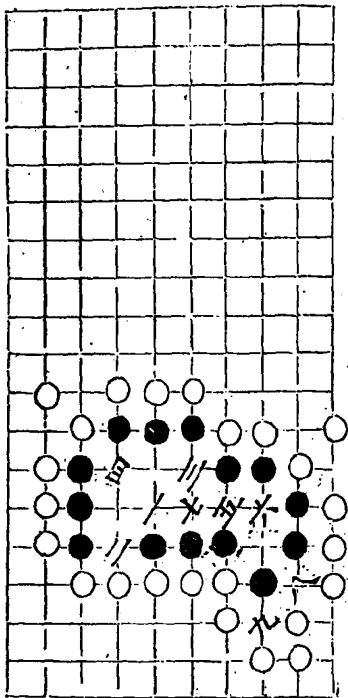
紀信詐降



星網



白鶴交

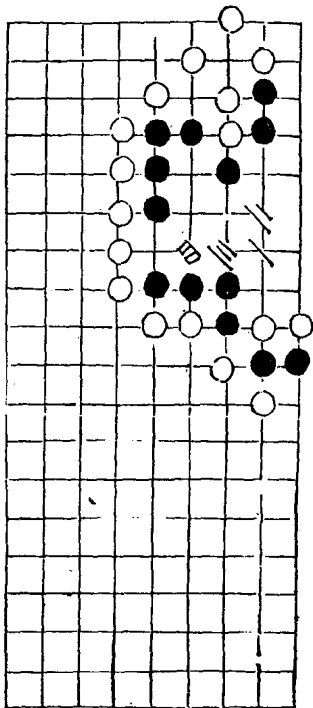






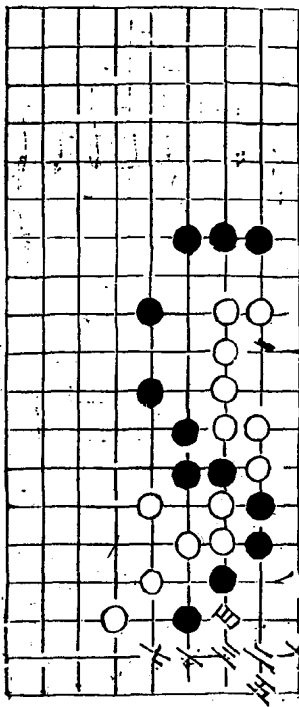


二變活

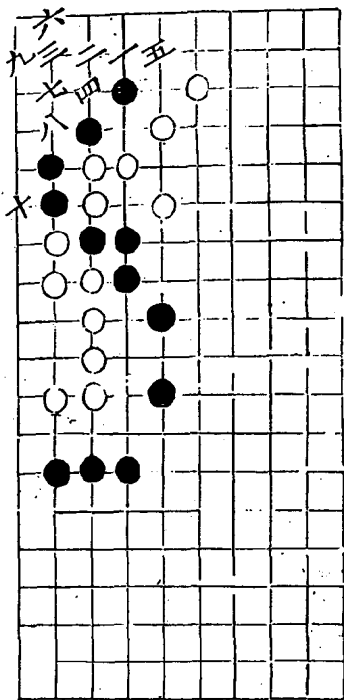




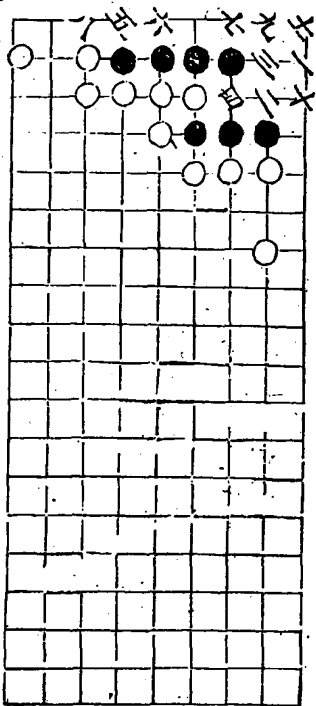
新變活



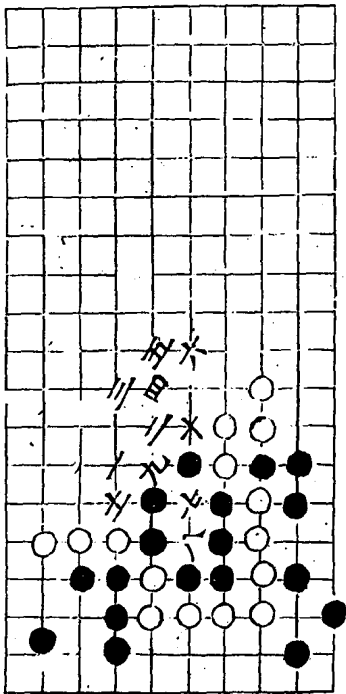
新變活



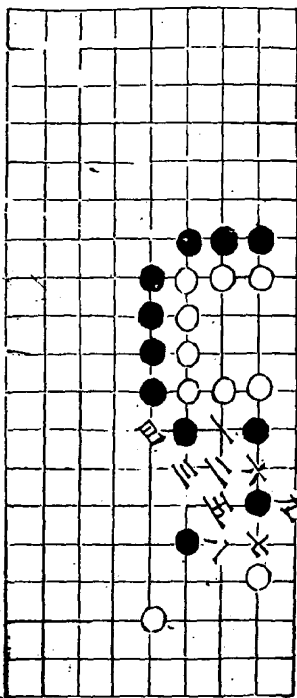
# 破虫尤



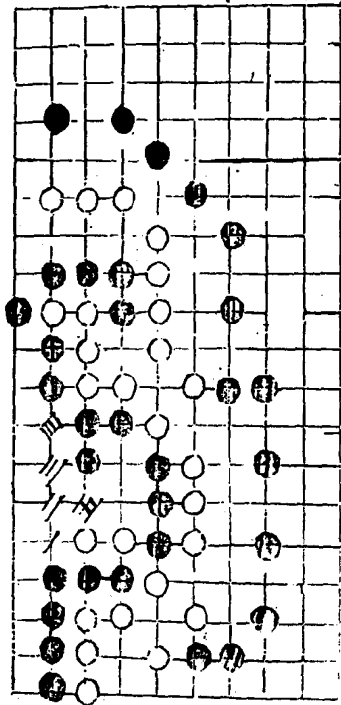
八龍



錦香囊

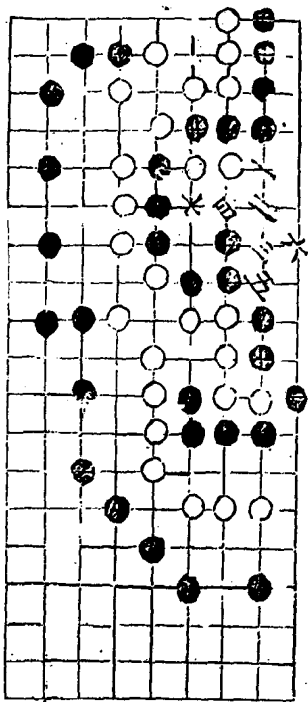


用策

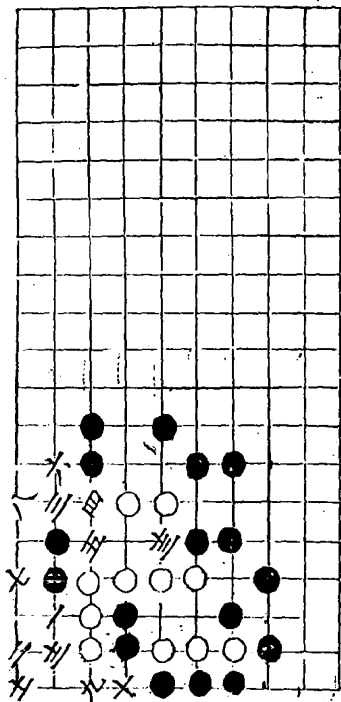




二變

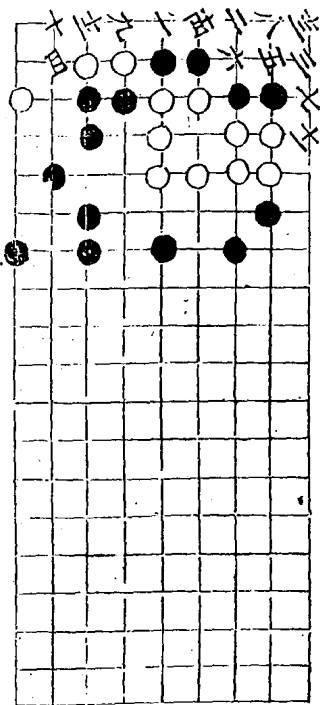


十二曜



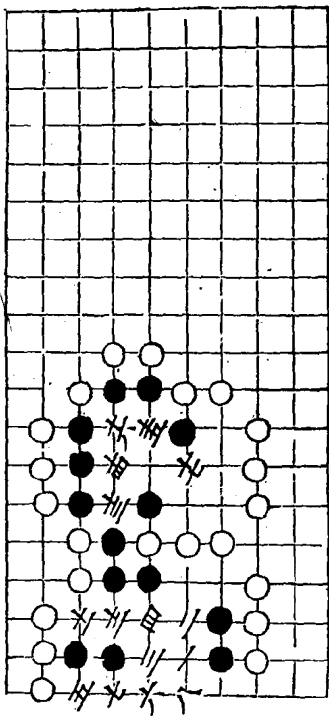
蘇武持節

十五六打

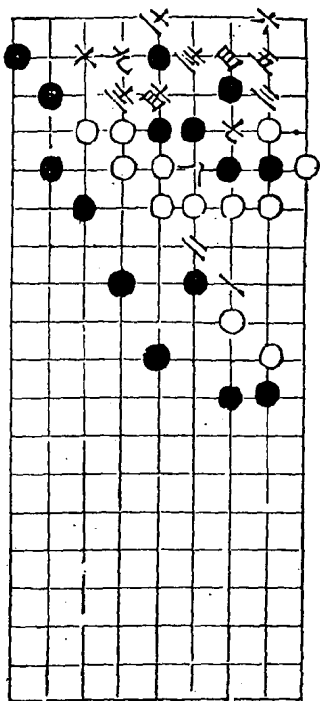


篁篥

九同三  
十尙

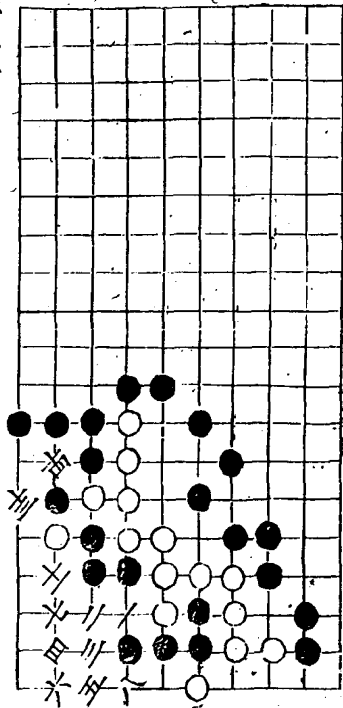


雙鵬 劫勝

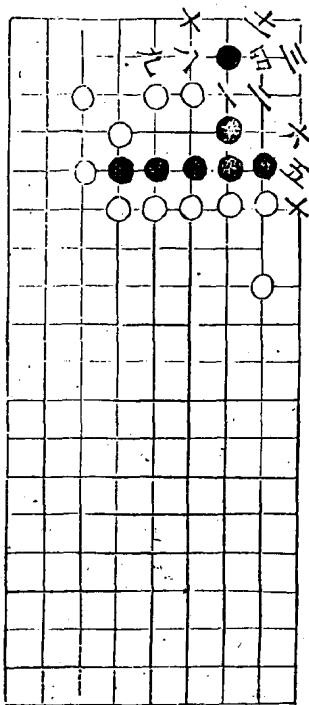


寸心千里

九同三 十同五 士同三

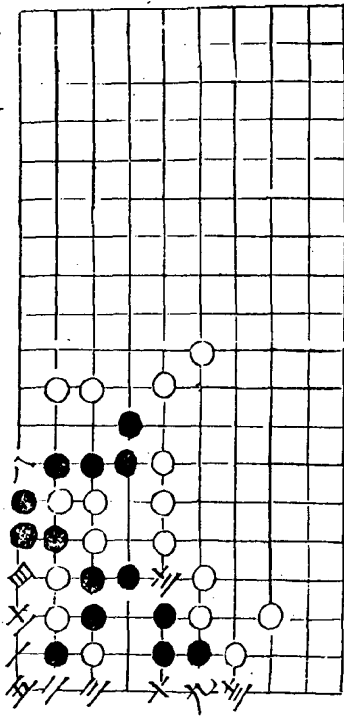


虎驅羊



解連環

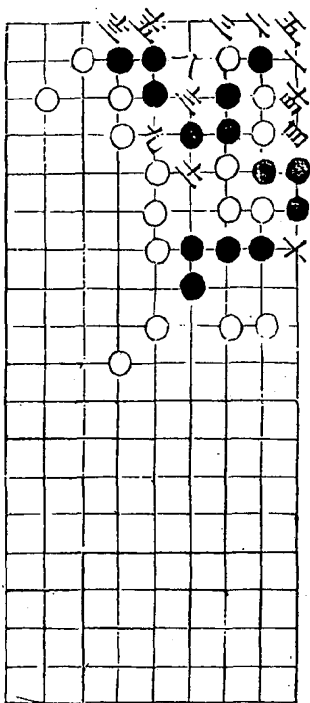
六三點 七回二





# 二變

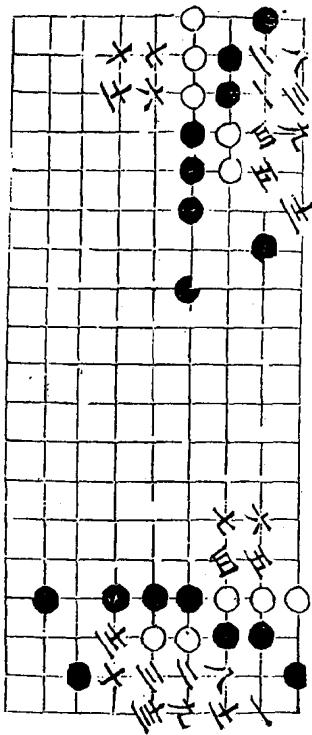
六三點 七向二 六向六 十三打



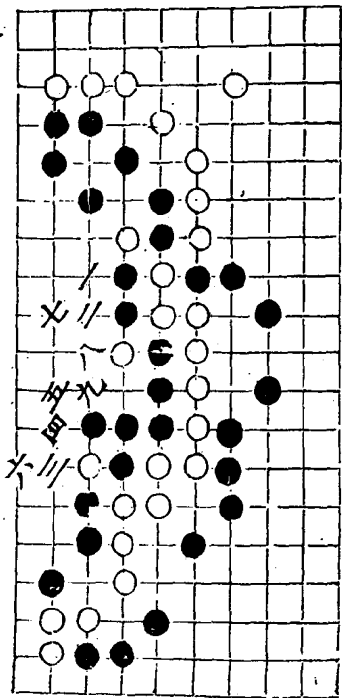


晏生 黑勝

二變

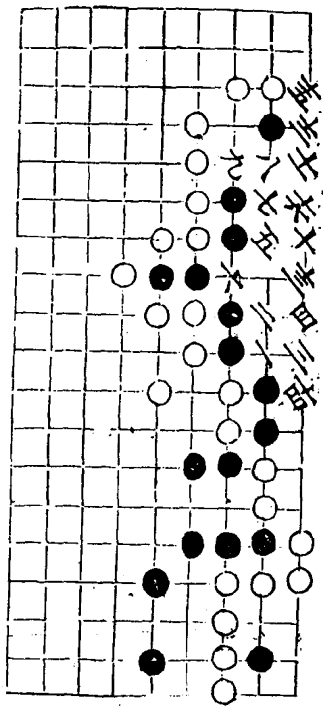


養虎



玄機

十五圖

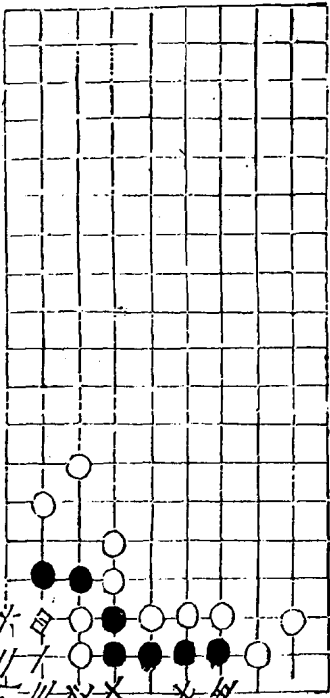


擒縱

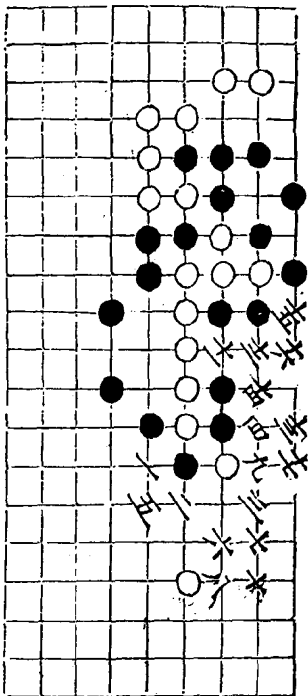
大正...

...

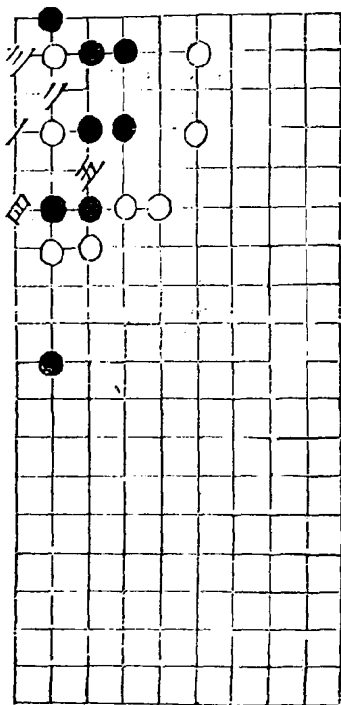
...



十將



相如歸壁





火内蓮花

